

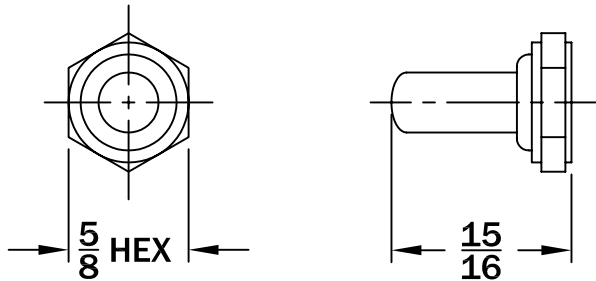
SPECIFICATIONS: Mat'l: UV & Weather Resistant
EPT Rubber

TOGGLE BOOT

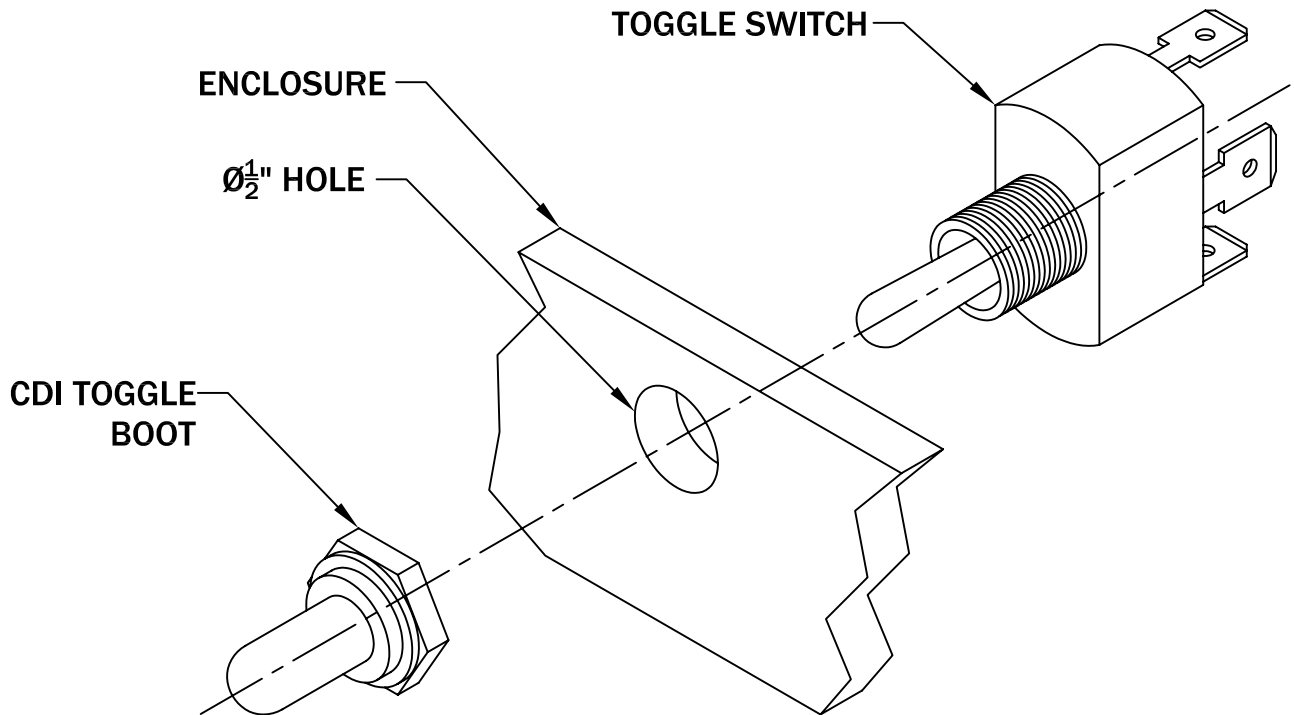


ID Thread size: $\frac{15}{32}$ -32
Environmental Ratings:
Nema 1, 2, 3, 3R, 4, 4X, 12 & 13
UL Recognized #E226322

PAGE
1



TYPICAL INSTALLATION



ALL INFORMATION CONTAINED IN THIS DRAWING IS CONFIDENTIAL
AND PROPRIETARY TO COMPONENT DESIGN, INC.



**Component
Design, Inc.**

CHANGES		TOLERANCES	DRAWN BY	DATE	SPECIFICATION SHEET DIMENSIONAL DATA	
F		DECIMALS .XXX = ±.005 .XX = ±.010 FRACTIONAL X/X = ±.1/64 ANGLES X° = ±1/2°	D. MIDDLETON	11/03/04		
E			MATERIAL SPECIFICATION: AS NOTED		FULL	TOGGLE BOOT
D						
C						
B						
A						