

Air Compressor



Part No. HR10WB3



The HR10WB3 is designed for use with bubbler type liquid level control systems with a control range of 0-15 feet of water column.

Features

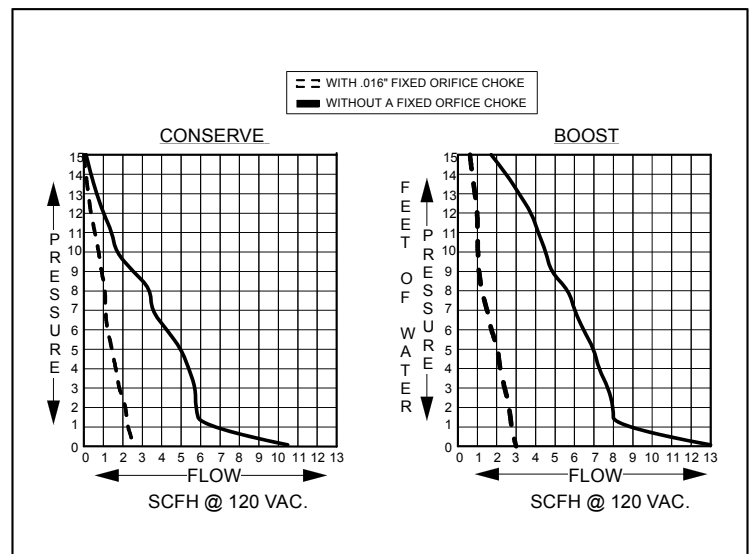
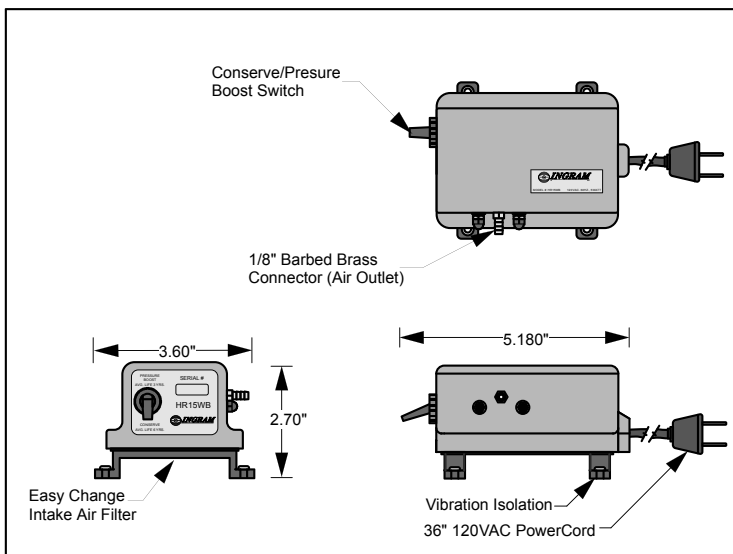
- One year warranty
- Rubber vibration isolation mounting feet provide quiet operation
- Oil free compressor never requires lubrication
- Features a two speed switch, pressure boost or conserve, which allows optimum flow/pressure settings
- Two replacement intake air filters included
- Low power consumption
- Corrosion resistant, aluminum panel mounting bracket sold separately: Part No. HRMTBKT

Technical Specifications

- 6W, 60Hz @ 120VAC

Accessories

- A fixed orifice choke with a .016" hole is available for use with air compressor to reduce airflow volume. (See graph on reverse side) Part No. IM-.016.
- The back check valve prevents fluid from getting back to your pump during shutdowns and power failure. Part No. AP19CV0012NL.
- The 5 micron discharge air filter gives one final filtering of air before it goes out to your equipment. It will filter damaging dust particles from air supply. Part No. AP19FV0012P1L .



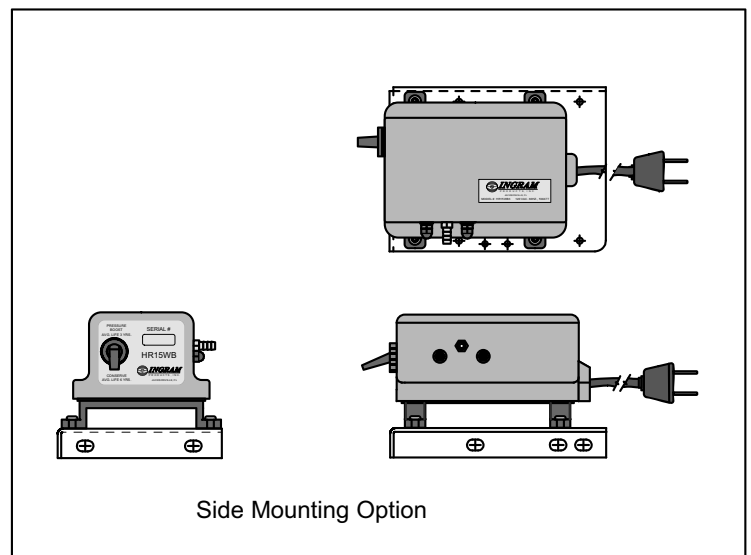
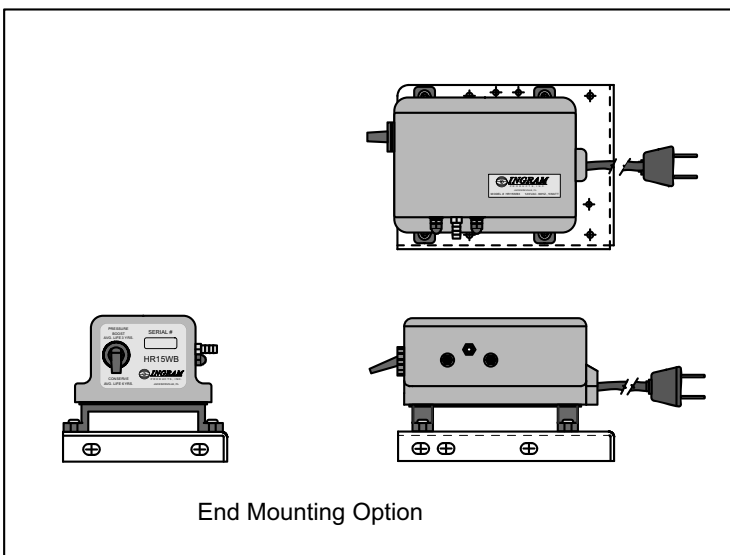
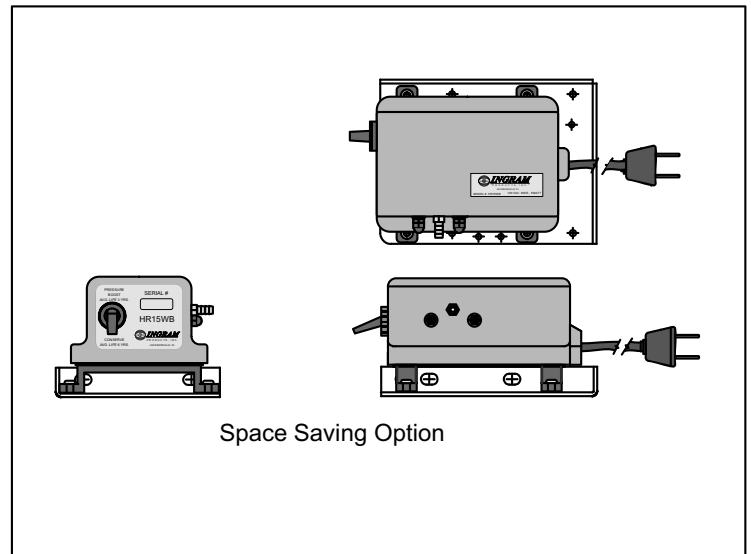
Mounting Bracket

Part No.: HRMTBKT



Features / Technical Specifications

- Fits HR10WB3 & HR15WB pump
- Dimensions: 2.25 x 11.062 x .312
- Fabricated from 3003-H14 aluminum.
- Finish: Brushed with gold irridite
- Mounting: side or end
- Metal thickness: .080"
- Center hole allows for quick filter change



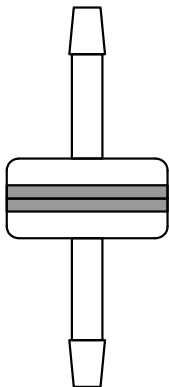
HR Pump Accessories



Part Nos. AP19FV0012P1L, AP19CV0012NL, IM-.016



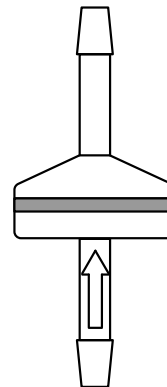
Did you know that these little parts can add life to your air compressor? Just put them inline with your Ingram Products HR10WB3 and HR15WB air compressors and see the results years down the road.



Discharge Air Filter

The Discharge Air Filter provides a final stage of filtering before it goes out to your equipment. It will filter particulates that can clog small orifices and impede air flow. Keep your compressor clean and running smoothly with the AP19FV0012P1L.

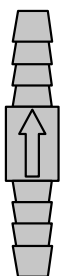
AP19FV0012P1L



Back Check Valve

The Back Check Valve has a very low crack pressure and will prevent fluids from getting back to your pump during shutdowns or power failure. Avoid drowning your valuable compressor with the AP19CV0012NL.

AP19CV0012NL



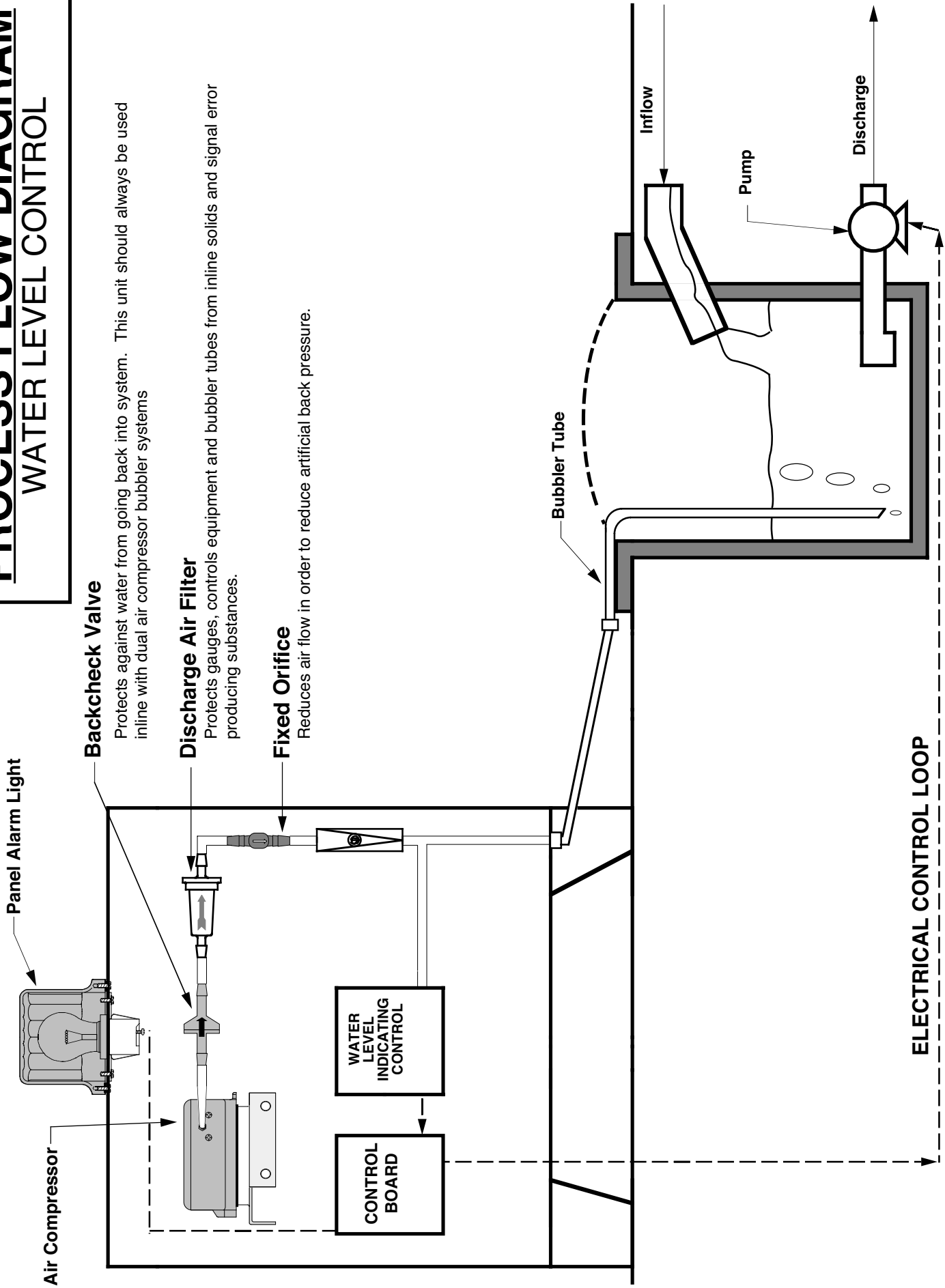
Fixed Orifice

The Fixed Orifice is designed to steady air flow and reduce pulsing. Insure accurate pressure readings and install the IM-.016 diameter fixed orifice into your compressor system.

IM - .016

PROCESS FLOW DIAGRAM

WATER LEVEL CONTROL



Backcheck Valve

Protects against water from going back into system. This unit should always be used inline with dual air compressor bubbler systems

Discharge Air Filter

Protects gauges, controls equipment and bubbler tubes from inline solids and signal error producing substances.

Fixed Orifice

Reduces air flow in order to reduce artificial back pressure.

Bubbler Tube

Inflow

Pump

Discharge

ELECTRICAL CONTROL LOOP

Panel Alarm Light

Air Compressor

WATER LEVEL INDICATING CONTROL

CONTROL BOARD